

Tugboats

Santa – 1501, April 2008

Stella – 1502, June 2008



Application Towing, mooring, escort, fire fighting, oil recovery
Classification BUREAU VERITAS
Notation 1*HULL, *MACH, Coastal area – temporary unrestricted navigation, Escort Tug, Ice Class 1A, Fi-Fi`1, AUT – UMS, Oil recovery ship.

Main characteristics

Length O.A.	34.20 m
Breadth O.A.	12.70 m
Depth	5.63 m
Draft	3.90 m
Overall draft	4.80 m
Crew	8
Bollard pull	60 t
Speed	13,2 kn



Propulsion

Main engines	2× Caterpillar 3516B, rating A,
Total power	3650kW (4962bhp) @ 1600rpm
Azimuth thrusters	Rolls-Royce US255CP
Propeller dia	2600 mm

Tank Capacities, m³

Fuel oil	168
Lubricating oil	3.2
Oily water	3.6
Sludge	1.9
Fresh water	27
Sewage water	3.2
Foam	20
Oil harvesting storage	45
Dispersant	5

Auxiliary Equipment

Generator sets	2×VOLVO PENTA D7A-TA 139kW @ 1500rpm
Pumps	Alweiler
Sewage plant	
Oil recovery equipment	Ro-Clean Desmi

Deck Machinery

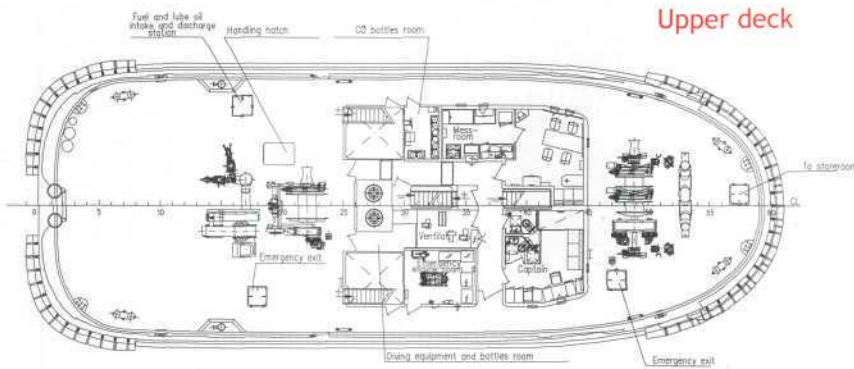
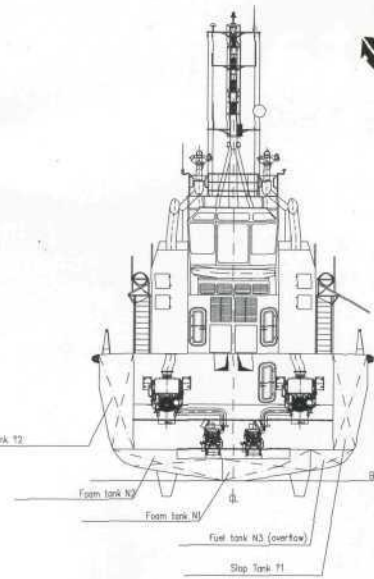
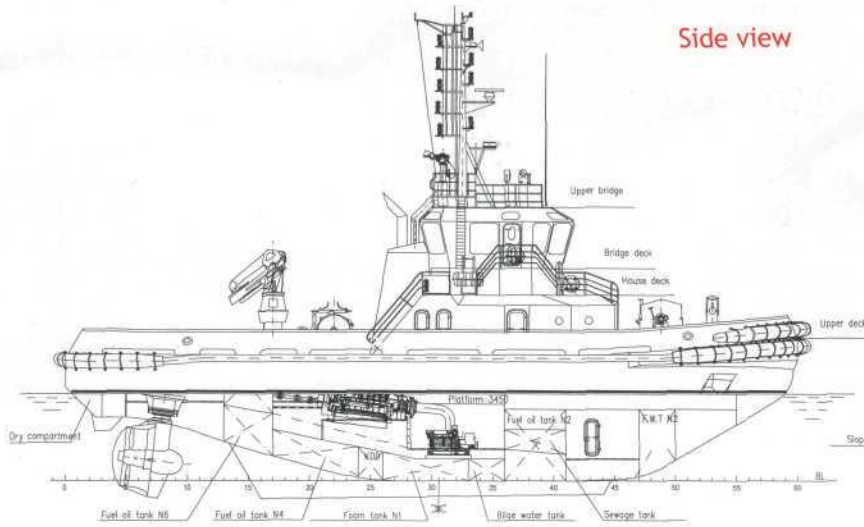
Fore winch	Rolls-Royce TW 1800/450/AW 20.5 G2H, 45t escort
Aft winch	Rolls-Royce TW 1800/200H, 20t at 8m/min
Hook	Mampaey 65 t SWL
Crane	Heila HLRM 45 4S, 5.700kg/7.10m, 2.800kg/13.18m

Fi-Fi System (Water/Foam)

Class	Fi-Fi 1
Fi-Fi pumps	2×1500m ³ /h, driven by main engine
Fire monitors	2×1200m ³ /h
Deck waterspray system	

Riga Shipyard
2 Gales iela, LV-1015 Riga, Latvia
Phone: +371 67 349 373
Fax: +371 67 353 994
shipbld@riga-shipyard.com
www.riga-shipyard.com

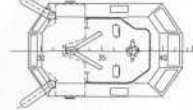
Tugboats



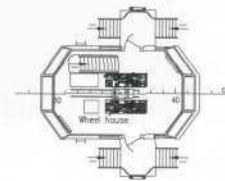
Top deck platform



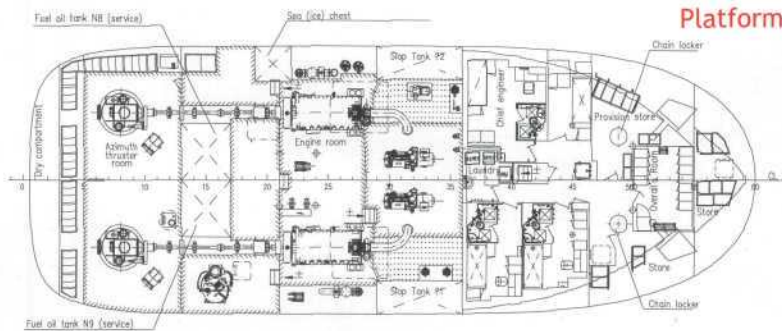
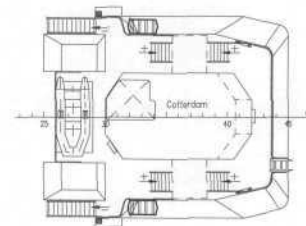
Upper bridge



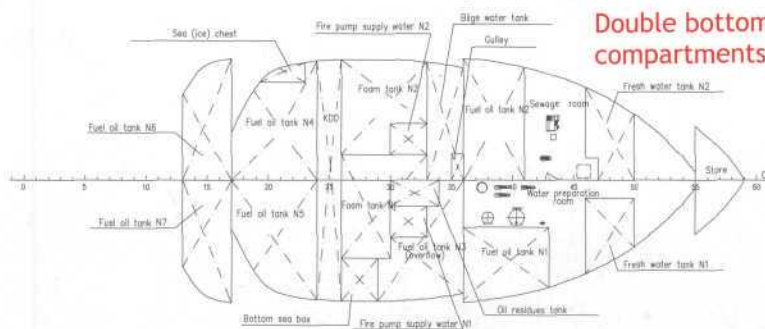
Bridge deck



House deck



Double bottom compartments



Platform 3450

